



MISSION PROMISE  
COMUNIDAD PROMESA DE LA MISSION  
NEIGHBORHOOD

# A community anti-poverty education initiative

To close the achievement gap for Latino students in San Francisco's Mission District, 20 partners agreed to a common agenda and shared measurement.

Started in 2013, MPN is a **cradle-to-career continuum** of wraparound services to strengthen families and students.



PRENATAL TO FIVE



K - MIDDLE SCHOOL



HIGH SCHOOL & BEYOND

# KEY RESULTS

Based on the theory that economic stability for families will lead to **improved outcomes** in school, the Mission Promise Neighborhood (MPN) two-generation approach serves families at nine K-12 schools, three early learning centers and 11 family child care providers — connecting families to services, supporting students and guardians in schools, and using Results-Based Accountability to define and measure outcomes.

20,873

individuals served across all MPN programs since partners began sharing information in 2013.

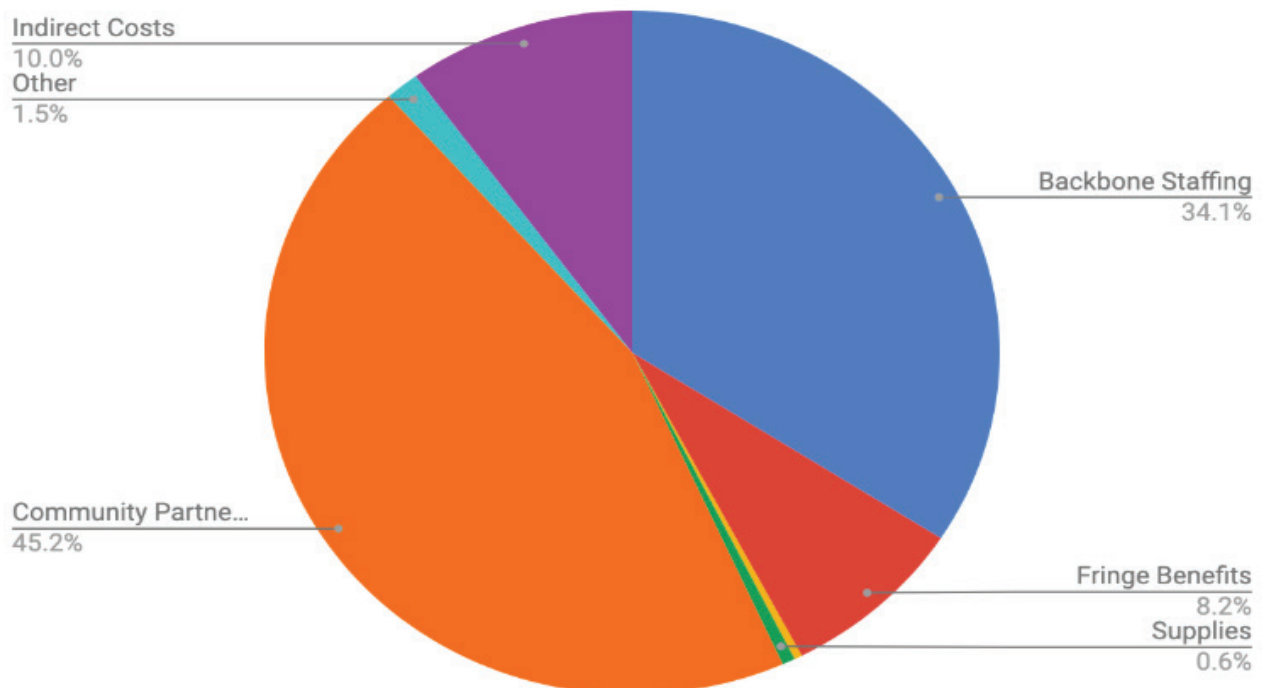
9,893

below-market-rate (BMR) housing applications completed with 2,850 families since 2015.

6,458+

referrals across the partner network since 2014, connecting families to jobs, health care, legal services and more.

## Our Annual Budget: \$3.5M



# More Results

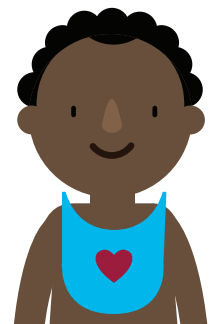
- Families reporting a medical home for children 0-5 **increased from 61 percent in 2016 to 80 percent** in 2018.
- Meeting **100 percent** of the need for preschool slots for subsidy-eligible children in the Mission.
- 5-year-olds who tested as kinder-ready **increased from 25 percent in 2015 to 45 percent** in 2018 at target schools.
- Students testing at or above grade-level in Eighth-Grade Math **increased from 30.2 percent in 2015 to 41.8 percent** in 2018.
- Students testing at or above grade-level in Eighth-Grade English Language Arts **increased from 22.1 percent in 2013 to 36.2 percent** in 2018.
- High school graduation rates at target high school **increased from 68 percent in 2012 to 89 percent** in 2018.

# Our Opportunity

Service providers in the Mission have invested in aligning their work around a common set of goals and that collective work is now bearing fruit – in improved outcomes for students and families, as well as in greater capacity for organizations on the ground. We have an opportunity to leverage what we have learned and the momentum we have gained to support families who are at the highest risk of displacement during this housing crisis and under increased pressure from anti-immigrant policies by the Federal Government.

## MPN'S WORK HAS LED TO ...

- Development and preservation of affordable housing in San Francisco's Mission District.
- Creation of permanently affordable real estate space for nonprofits and community-serving retail in the Mission.
- The launch of California Promise Neighborhoods Network (CPNN) to build the impact of Promise Neighborhoods statewide.
- Leadership development and advocacy opportunities leading to parents organizing for political power and systems change.
- Synchronicity between service providers across the Mission who have aligned to advocate for funding, housing policies, and education policies specifically targeted to improve the lives of San Francisco's Latino families.



# THE RISK TO OUR COMMUNITY

MPN funding ends June 30, 2020, when the federal grant sunsets. The California Promise Neighborhoods Act of 2019 (SB 686) would create a new program to award competitive grants to 20 Promise Neighborhoods across the state.

The bill has been approved by the full Senate and the Assembly Education Committee, but is currently being held at the Governor's request for next year. If this bill is successful and approved in July 2020, the state funding could eventually help MPN; however, the funding would be too late to cover MPN's operating costs between July 1, 2020 and time to full implementation of the new grant program. **We are now seeking both stop-gap and ongoing funding from alternative sources.**

MPN partners have invested in building infrastructure that makes the alignment of our work possible. Losing funding means not just losing valuable services to students and families in the Mission — it also means the loss of the multiplier effect of many organizations complementing one another's strengths during a time when they are needed the most.



# MPN PARTNERS

## MPN-Funded CBOs: \$1.5M

Felton Institute

Good Samaritan Family Resource Center

Homeless Prenatal

Instituto Familiar de la Raza

Jamestown Community Center

La Raza Centro Legal

Mission Graduates

Mission Neighborhood Centers, Inc.

Mission Neighborhood Health Center

Nurse-Midwives of SFZGH

Parents for Public Schools

Seven Teepees

SFUSD—Early Education Department

Support for Families

Tandem, Partners in Early Learning

YMCA Urban Services

## Backbone Support Personnel: \$1.5M

Promise Neighborhood Director

Associate Director

K-12 Program Manager

Early Learning Program Manager

Family Support Program Manager

School-Based K-12 Family Success Coaches (8)

Early Learning Family Success Coaches (3)

Administrative Coordinator

## Institutional Partners

Children’s Council of San Francisco

Department of Children, Youth and Their Families

First 5 San Francisco

San Francisco Department of Public Health

San Francisco Mayor’s Office of Housing & Community Development

San Francisco Office of Early Care and Education

San Francisco Office of Economic and Workforce Development

San Francisco Unified School District

San Francisco Office of the Mayor



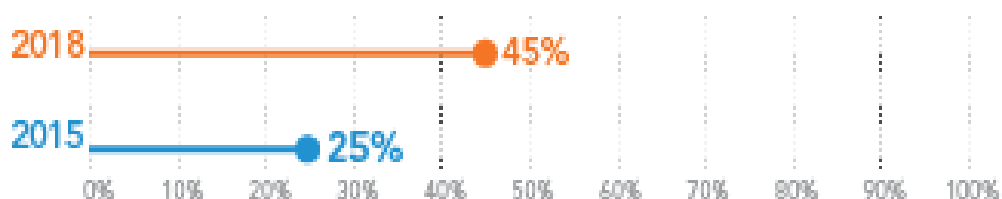
**MISSION PROMISE**  
COMUNIDAD PROMESA DE LA MISION  
**NEIGHBORHOOD**

# CHARTING SUCCESS

Kindergarten readiness scores increased from 25 percent in 2015 to 45 percent in 2018 at Bryant and Chavez Elementary Schools (combined).



**Kinder readiness at Bryant and Chavez elementary schools (2015-2018, combined)**

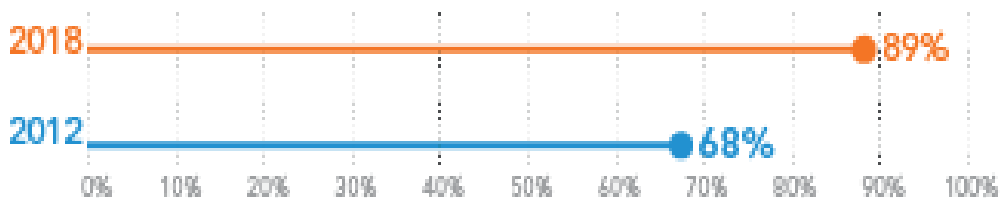


*Percent of kindergartners who demonstrate age-appropriate functioning.*

High school graduation rates increased from 68 percent in 2012 to 89 percent in 2018, exceeding the overall district rate.



**Graduation rate at John O'Connell High School (2012-2018)**



**We must keep this momentum going as an anti-poverty strategy.**

## MPN Advisory Board

**Curtis Chan, MD**

*Medical Director of Maternal, Child & Adolescent Health, Dept of Public Health*

**Brian Cheu**

*Director of Community Development, Mayor's Office of Housing & Community Development*

**Jennifer Freeman, Ph.D.**

*Principal, Chavez Elementary School*

**Carolyn Goossen**

*Chief of Staff, Supervisor Ronen's Office*

**Wylie Liu**

*Executive Director, Center for Community Engagement, UCSF*

**Gabriela López**

*SFUSD School Board Commissioner*

**Ingrid Mezquita**

*Director, Office of Early Care and Education*

**Jessica Mindnich, Ph.D.**

*Director of Strategic Learning and Evaluation, The San Francisco Foundation*

**Myrna Melgar**

*Executive Director, Jamestown, President, SF Planning Commission*

**Mario Paz**

*Executive Director, Good Samaritan Family Resource Center*

**Susan Ryan**

*Principal, John O'Connell High*

**Laurie Scolari, Ed.D.**

*Associate Vice President of Student Services, Foothill College*

**Maria Su, PsyD.**

*Director, Department of Children, Youth and Their Families*

**Kevin Truitt**

*Chief, Student, Family, and Support Division, SFUSD*



It takes a community of support to ensure *all* of our kids in the Mission have the tools to succeed.



**Contact:** Richard Raya (415) 282-3334 ext. 155; rraya@medasf.org

Additional information on the impact of the Mission Promise Neighborhood can be found @

[missionpromise.org](https://missionpromise.org)

---

Mission Promise Neighborhood (MPN) | Plaza Adelante: 2301 Mission Street, Suite 304, San Francisco, CA 94110

(866) 379-7758 | [missionpromise.org](https://missionpromise.org)

3271-07082918