

THE JOURNEY TO RESULTS

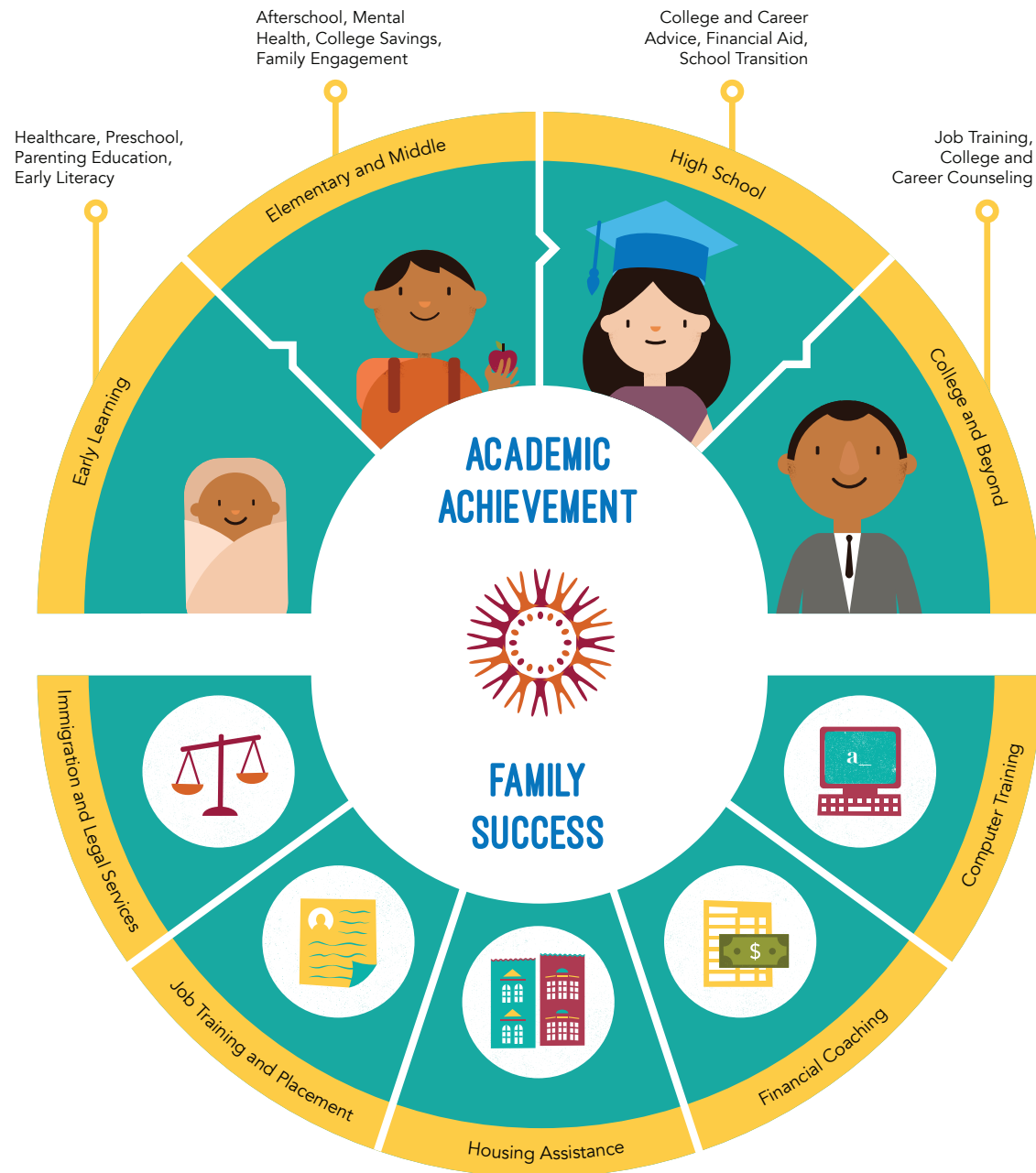
2016 Report to the Community



MISSION PROMISE
COMUNIDAD PROMESA DE LA MISSION
NEIGHBORHOOD

OUR MODEL

Education is more than what happens in the classroom. By connecting families with the community resources they need to succeed in life, we give students their best shot at academic achievement.



OUR PARTNERS

0-5

Prenatal care
Medical Home for Children
Early Head Start & Head Start
Pre-School
Parenting Education
Story Cycles Book Rotation Program
Access to Subsidized Child Care
Transitions
Early Childhood Mental Health
Developmental Screenings and Support

STARTING THE JOURNEY HEALTHY

Mission Neighborhood Health Center | UCSF Nurse Midwives at San Francisco General Hospital

EARLY LEARNING SITES

Felton Institute | Mission Neighborhood Centers | Good Samaritan Family Resource Center | San Francisco Office of Early Care and Education | SFUSD Early Education Department

EARLY LEARNING ENHANCEMENTS

Children's Council of San Francisco | First 5 San Francisco | Infant Parent Program at UCSF | Support for Families | Tandem

FAMILY SUPPORT

Parent Leadership: Jamestown | Mission Graduates | Mission Parent Council | Parents for Public Schools **Family Stability:** Mission Economic Development Agency | La Raza Centro Legal | Refugee Transitions

K-12

Coordinate Partner Program
Positive/Strong School Climate
Extended Learning
Transition to High School
Digital Storytelling
Trauma-Informed Support
Mental Health Consultations
Saving for College
College & Career Center
Tenants Rights
Immigrant Issues
English Classes

SCHOOL SUPPORT

Community School Coordinators | Mentoring for Success | Nurses | San Francisco Unified School District | Social Workers | Family Success Coaches

AFTER-SCHOOL + SUMMER PROGRAMS

Jamestown Community Center | Mission Graduates | Seven Tepees Youth Program | SF Department of Children, Youth, and their Families | Urban Services YMCA SF

SPECIALIZED SUPPORTS

Instituto Familiar de la Raza | Streetside Stories | UCSF Healthy Environments and Response to Trauma in Schools

COLLEGE ACCESS

Seven Tepees | Mission Graduates | San Francisco Kindergarten to College (K2C)

I'M SOFIA



... AND THIS IS MY FAMILY.
FOLLOW OUR MISSION PROMISE
NEIGHBORHOOD JOURNEY...

MPN IN A CLASS OF ITS OWN

It's hard to believe it's been four years – amazing! – that our dedicated MPN team, community partners, stakeholders and school staff have been working collaboratively, joining as one in a concerted effort to achieve results for the deserving families of San Francisco's Mission District.

It's about strengthening families. Increasing student achievement. Providing opportunity to level the playing field.

The results have been many, from raising reading scores to increasing graduation and college-going rates. True impact.

As you turn the following pages, I know you'll be equally amazed at MPN's impactful work to date.

But it doesn't end there.

I challenge everyone in the community to remain committed to our families as we continue to move forward, strengthening the Mission block by block, family by family and student by student.

Thanks to all for the ongoing support!

A stylized, handwritten signature in black ink, appearing to read 'Luis Granados'.

Luis Granados

Executive Director

Mission Economic Development Agency (lead agency)

CHILDREN ARE READY FOR KINDERGARTEN



OPPORTUNITY AND EQUITY MUST BEGIN AT BIRTH

Through 20+ partners, MPN ensures that parents and their children begin their journey with prenatal care, center-based quality early care, mental health consultation for child care providers, access to books, and parent education and engagement programs.

There are currently about 2,500 children from birth to age 5 in the Mission. In 2016, approximately 700 of the 3- to 5-year-olds attended an early care and/or preschool program at one of our trio of early learning partner sites (Good Samaritan Family Resource Center, Mission Neighborhood Center, Felton Institute, Cesar Chavez PreK, and Bryant PreK). Given the high quality of these programs, preschoolers are making gains.

2016 RESULTS

24% INCREASE

in 4-year-olds' DRDP scores in the 2015-2016 school year

562 15% REFERRED FOR FOLLOW-UP SUPPORT

children in early learning programs, all receiving developmental screenings

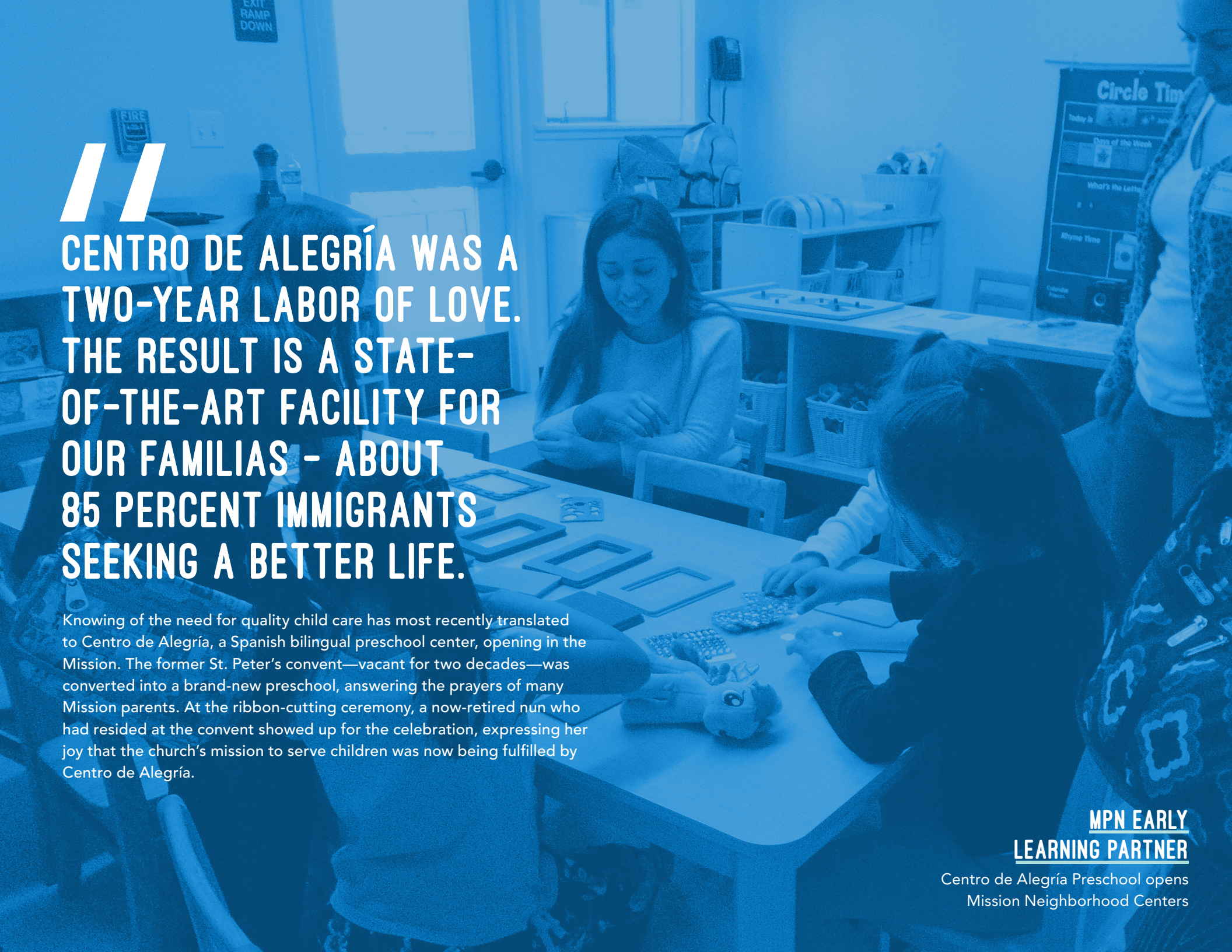
77% UP FROM 64% IN 2014

of parents reported reading to their children at least three days a week



OUR JOURNEY TO SECURE

- A medical provider
- Prenatal care
- Developmental screenings for children
- Infant care
- Connection with other mothers



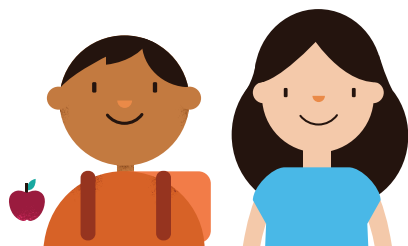
// CENTRO DE ALEGRÍA WAS A TWO-YEAR LABOR OF LOVE. THE RESULT IS A STATE- OF-THE-ART FACILITY FOR OUR FAMILIAS – ABOUT 85 PERCENT IMMIGRANTS SEEKING A BETTER LIFE.

Knowing of the need for quality child care has most recently translated to Centro de Alegría, a Spanish bilingual preschool center, opening in the Mission. The former St. Peter's convent—vacant for two decades—was converted into a brand-new preschool, answering the prayers of many Mission parents. At the ribbon-cutting ceremony, a now-retired nun who had resided at the convent showed up for the celebration, expressing her joy that the church's mission to serve children was now being fulfilled by Centro de Alegría.

**MPN EARLY
LEARNING PARTNER**

Centro de Alegría Preschool opens
Mission Neighborhood Centers

STUDENTS ACHIEVE



THE JOURNEY CONTINUES WHEN CHILDREN ENTER SCHOOL

A network of students, teachers, administrators and parents work collaboratively to ensure all children receive a great education, graduating high school and well prepared to fulfill their college and career dreams. In 2016, MPN aimed to work with the 2,600+ students who attended four SFUSD schools in the Mission:

- Bryant and Cesar Chavez elementary schools
- Everett Middle School
- John O'Connell High School

MPN schools are full-service community educational institutions, providing vital resources students such as social workers, nurses and mentoring programs. In addition, teachers receive mental health consultation, students have access to after-school and enrichment programs, and parents are leaders at home, at school and in their communities.



OUR JOURNEY TO SECURE

- Parent engagement programs at schools
- An after-school program
- Community Schools

2016 RESULTS

41% UP FROM
25%
IN 2015

of MPN fifth-graders are proficient in English Language Arts—nearly closing the gap with SFUSD's 47 percent districtwide proficiency

85% UP FROM
79%
IN 2015

of JOC students graduated high school in 2016

91% ▲ 82%
FROM
2014

of parents report their children read at least three times per week outside of class



I WANT TO BE THE NEXT PRESIDENT OF THE UNITED STATES!

Joel is a typical student at Bryant Elementary School. He loves to read, play with his friends and has been making important academic progress. In 2016, Bryant posted among the largest gains in English Language Arts proficiency rates on the statewide assessment of all SFUSD schools, a 16 percent increase from 2015. Bryant's community of teachers, parents, support teams and after-school partners are making sure all students like Joel can be the next president of the United States.

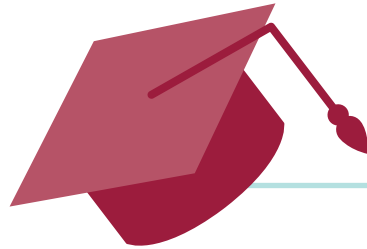


MPN

AFTER-SCHOOL PARTNER

Bryant Elementary School

STUDENTS GOING TO COLLEGE



FOSTERING A COLLEGE-GOING CULTURE

The MPN network includes partners fostering a college-going culture for all Mission students. Our students' journeys take them through high school to complete college-ready courses, apply for college and financial aid, and complete college or a vocational program.

The overall result is that as of 2015, 71 percent of our students are enrolled in college.



OUR JOURNEY TO SECURE

- Mentoring for high school-age student
- Financial aid for college

2016 RESULTS

68%

of high school seniors submitted a four-year college application

84%

of high school seniors submitted a community college application

85%

of high school seniors completed the financial aid application (FAFSA)

75%

▲ 7%
FROM
2014

of parents report talking to their children about college and career



//

**IT FEELS REALLY GREAT HAVING
THE MISSION COMMUNITY'S
SUPPORT. THE SCHOLARSHIPS
I'VE BEEN OFFERED HELPED PAY
FOR MY TUITION AND BOOKS.**

Though Ivonne heeded her mother's counsel to dream big, she knew paying for college would be challenging. After being admitted into San Francisco State University, Ivonne heard about the Mission Promise Neighborhood Scholarship opportunity and was one of four John O'Connell High School seniors to receive the award. The scholarship was launched in spring of 2016 with \$10,000 raised through a community effort of individual and corporate matching funds. The scholarship is one more way that MPN is making college a reality for Mission students.

STUDENT

IVONNE VILLANUEVA

John O'Connell High School graduate, Spring 2016
San Francisco State University freshman, Fall 2016

FAMILIES = SUPPORTED PARENTS = LEADERS



WHY COMMUNITY ENGAGEMENT MATTERS

Community engagement was an important aspect of the Promise Neighborhood grant written back in 2012. One of MPN's answers to that piece of family success was the creation of a parent leadership group, known as the Mission Parent Council. The goal is for parents to strengthen their advocacy efforts for themselves and their children — and the Mission community at large. This has led to parents deciding which topics matter to them and identifying the support they need to champion those causes. A subject of importance was determined to be Prop N, the Immigrant Parent Right to Vote measure on the San Francisco ballot. Members of the Mission Parent Council were an important piece of the effort that led to this measure being passed in November 2016.

2017 RESULTS

346 ▲ 59%
FROM
2015

families worked with a
Family Success Coach

151

families received assistance
to stay in or find new
affordable housing



OUR JOURNEY TO SECURE

- Housing Opportunities
- Financial Coaching
- Job Training
- Parent Advocacy Opportunities

ADVISORY BOARD



BRIAN CHEU

City of San Francisco, Mayors Office of
Housing and Community Development

CURTIS CHAN

City of San Francisco, Department of Public
Health

HEDY CHANG

Attendance Works

WYLIE LIU

University of California, San Francisco

MYRNA MELGAR

Jamestown Community Center



HYDRA MENDOZA

City of San Francisco, Office of the Mayor
San Francisco Unified School District

INGRID MEZQUITA

First 5 San Francisco

MARIO PAZ

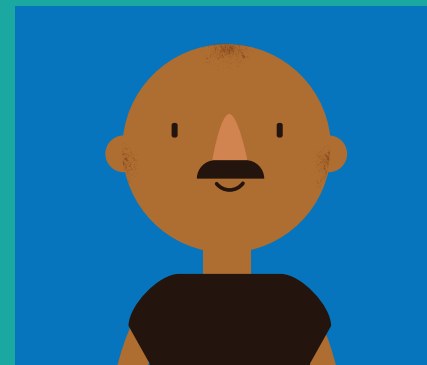
Good Samaritan Family Resource Center

HILLARY RONEN

City of San Francisco, Board of Supervisors

MARIA SU

San Francisco Department of Children, Youth and
their Families



JOAQUIN TORRES

City of San Francisco, Office of the Mayor

KEVIN TRUITT

San Francisco Unified School District

LENA VAN HAREN

San Francisco Unified School District

CHRISTINA VELASCO

San Francisco Unified School District



To learn how you can support MPN: Jillian Spindle, MEDA | (415) 282-3334 ext. 116 | jspindle@medasf.org
Mission Promise Neighborhood, 2301 Mission Street, Suite 303, San Francisco, CA 94110 | missionpromise.org | (866) 379-7758